

KERN REGIONAL CENTER

3200 N. Sillect Avenue • Bakersfield, CA 93308 • (661) 327-8531

Board of Directors Meeting

6:00 p.m. – 7:30 p.m.

KRC Malibu Conference Room

3300 N. Sillect Ave.

Bakersfield, CA 93308

MINUTES

October 25, 2016

Present Board Members:

Frank Meyer, President

Kurt Van Sciver

Matthew Lagrand

Veronica Quezada

Lorie Stewart

Laurie Hughey

Quanah Mason

Nickolerene Mensch

Tracy Brown

GENERAL BUSINESS

1. Call to Order and Introductions

The meeting was called to order at approximately 6:00 p.m. by Frank Meyer. It was determined that a quorum was present.

2. Approval/Additions to Agenda

A. Regular Meeting of the Board of Directors Agenda dated October 25, 2016.

M/S/C - (Mason/Brown) to approve the Agenda with additions. 9-0-0.

Additions as follows:

Item 5 - Board Presidents Report – a. Vote in Replacement.

Item 10, c – add a motion for approval.

Add item 12. ARCA Report.

3. Meeting Minute Approval

A. Minutes of the Regular Meeting of the Board of Directors held September 27, 2016.

M/S/C - (Hughey/Mensch) to approve Minutes. 9-0-0.

4. Public Input

A. Christina Rajlal – Christina is the new Director of Special Projects and Program Development for NAPD. Christina spoke of NAPD's fleet service specialties. NAPD has a full service mechanic shop that caters to fleet industry and private vehicles.

B. Cindy Martinez & Melvina Mull – The Thanksgiving Basket Committee attended the vendor luncheon and raised approximately \$2000. Eva Rocha and Laura

Hughes are working to obtain a grant from the foundation. Leon Denweed has offered to donate \$500.00. There will also be a Go Fund Me account set up. The committee's goal is to raise \$4000.00 in order to put about 200 baskets together.

UNFINISHED BUSINESS

REPORTS

5. Board President Report

- A. Frank announced that Carol Sackey has not been able to attend very many meetings and a letter was sent to her. At this point, the board will not be renewing her term.
- B. Frank also announced that although he is stepping down as Board President, he will continue on the board for an indefinite amount of time.
 - a. Veronica Quezada makes a motion to assign Kurt Van Sciver as interim President. **M/S/C** - (Quezada/Lagrang) to assign Kurt Van Sciver as interim Board President. 8-0-1 (Van Sciver).
- C. Kurt would like the Nominating Committee to reform and bring aboard new members in order to make the Board whole again.
- D. Kurt responded to the questions from last month's board meeting.
 - a. To the questions regarding the social security issue, Kurt announced that the board is going to meet with counsel to be advised on this matter.
 - b. The board is looking at issues regarding the defined benefit plan.
 - c. The board is also trying to improve the functionality of the Board and the Regional Center before moving on to select a Director to replace Robert Riddick.
 - d. The board does understand the deficit that the Regional Center is operating under and is taking its fiduciary responsibility seriously. The board does seriously look at the budget and its ramifications on staff, clients and vendors.

6. Financial Report

- A. Jon Gusman presented his financial report.
 - a. Please see **Attachment 1**.
 - b. Kern Regional Center's cash flow balance is \$14.3 million.
 - c. DDS notified the September claim for Kern would be paid in November.
 - d. DDS has suggested they will be offsetting claims beginning in May for March claims.
 - e. The C1 Contract Amendment, Regional centers were allowed to claim an advance on the C1 Contract Amendment. For Kern, the advance was about \$11 million. DDS has confirmed the C1 advances will be paid to Regional Centers.
 - f. To date, Kern has spent a total of \$4.62 million amongst the general fund community placement plan and its foster grandparent program. The overall percentage of actual spent to date is 24% with a projected amount to be spent of 79% from October to June 2017.
 - g. Kern's operation deficit rests at \$534,000. It remains unchanged from the last time reported.
 - h. The C1 allocation brought with it many new items, such as plans to ensure compliance with home and community based service regulations and improve service coordinator ratios.

- i. DDS provided a C1 contract amendment which shows the amount of funds Kern Regional Center obtained for new hires. The amount for service coordinator new hires, as a means to improve caseload ratio, was \$450,000.
- j. For fiscal year 16/17 purchase of services, as of September 30, 2016, Kern has spent a total of \$38.7 million amongst its purchase of service and community placement plan programs.
- k. The overall percentage of actual spent to date, when compared to what was received from the state in revenues, is 21.57%. Kern's first POS projection is not due to the state until December 10, 2016. Jon has provided an estimate as to what it may look like, with a projected balance of about \$4.1 million.

7. Interim Director Report

- A. Kern received word from the Department that effective January 1, 2017, Regional centers will decrease the amount of restorations funds for consumers residing independently. The amount will go down from \$61.20 to \$56.88 per month. Kern will notify vendors and clients.
- B. There was a deadline for vendors to apply for money in preparation for implementing the CMS rule; this deadline has been extended through the end of October.
- C. Two weeks ago, the Department held a meeting with regional center directors and directors of Fairview Developmental Centers. There was an emphasis on moving individuals out of the developmental centers in a timely manner. These large institutions receive federal funding; however, if they are out of compliance, the funds may be taken away. This may have a financial impact on Regional Center purchase of service.
- D. October 25th was the deadline for the ABX1-2 Disparity and Ethnicity grants.
- E. Kern is currently hiring to replace program managers and case managers who have left in the past year along with 7 new case management positions.
- F. Robert Riddick attended a meeting at Exceptional Families in early October. Robert emphasized at that meeting that Kern's deficit is related to the operations budget, not the purchase of service budget. KRC's operations budget does not have an impact on KRC's purchase of service budget.

8. Vendor Advisory Committee

- A. The Vendor Advisory Committee hosted the Lanterman's 50th Anniversary Celebration at the DoubleTree on October 12th. The keynote speaker was Tony Anderson, Director of the Association of Regional Center Agencies. Mayor Harvey Hall, Rudy Salas, and a representative from Senator Jean Fuller's office. Jean Fuller's office gave VAC a resolution; Mayor Harvey Hall declared October 12th Lanterman Day in Kern County.

9. Brilliant Corners

- A. Sami Abdelatif, Director of Operations for Brilliant Corners and Rodger Twitchell, Regional Development Manager, provided information on Brilliant Corners through a presentation. See **Attachment 2**.
 - a. Brilliant Corners was founded in 2004 with the mission to create affordable housing for individuals with developmental disabilities. In 2008, Brilliant Corners expanded their mission to serve other underserved populations.

- b. The corporate offices are located in San Francisco and Los Angeles with satellite offices throughout California.
- c. Brilliant Corners has about a \$90 million annual budget and is just shy of about 100 employees and have partnerships across the state with the Regional Center System as well as various public health agencies. To date, Brilliant Corners works with 12 Regional Centers throughout the state.

10. Staff Report

A. Self Determination

- a. The Self Determination Advisory Committee had their meeting on October 24th at the Kern Regional Center at 5:00 pm.
- b. The Committee had two trainings on the 24th. The first was on The Bagley-Keene meetings act, presented by Mario Espinoza, Office of Clients Rights Advocacy; the second was on Fiscal Management Service by Victor Lira, Premier and Laura Holman, Acumen.

B. Community Placement Plan

- a. KRC will be sending out a Request for Proposal for 11 projects. Two of the 11 are homes from Brilliant Corners.
- b. On September 29th, Robert Riddick, Lynn Fjeld, Cherylle Mallinson and Michelle Farley attended the Governor's Advisory Board Annual Regional Meeting at the Porterville Developmental Center.
- c. Theresa Billeci, Executive Director at Porterville Developmental Center, reported that 141 individuals are in the general treatment area while 209 individuals are in secured treatment area.
- d. Michelle Farley has, for this fiscal year, transitioned 3 individuals out of the PDC.

C. Plan of Action Regarding Caseload Ratio

- a. Laura spoke of KRC's new hire process. She explained that she anticipates 7 new service coordinators to be hired on by the end of the year.
- b. The Plan of Action regarding Caseload Ratio was presented at September's Board meeting.
M/S/C - (Meyer/Lagrand) to approve the Plan of Action regarding Caseload Ratio with a current date. 9-0-0.

11. Client Representative

- a. Roy Rocha visited DADD recently. Roy Rocha reports that the consumers would like for social recreation programs to come back. Roy asked for Robert Riddick's assistance to help contact the right people who can bring social recreation back.

12. CAC Client Advisory Committee

- a. Matthew Lagrand attended the Client Advisory Committee in Sacramento on October 24th. The committee was informed that the chair of the committee is stepping down as of January 2017.
- b. During the meeting, the clients discussed effective communication skills.
- c. Matthew Lagrand will be providing the DDS report for the Client Advisory Committee from now on.
- d. ARCA CAC legislative group also discussed social recreation and unmet needs.

- e. Matthew informed the board that he started a new project a couple of months ago, "Making our state great again."

NEW BUSINESS

GOOD AND WELFARE

- a. Meeting is adjourned at approximately 7:15 p.m.

The next Regular Meeting of the Board of Directors is scheduled for Tuesday, November 15, 2016, at 6:00 p.m. in the Malibu Conference Room at the Kern Regional Center.

Note: Requests for a disability related modification or accommodation, including auxiliary aids or services, in order to attend or participate in a meeting should be made to the Administrative Assistant during regular business hours at 661-852-3360.

Respectfully submitted: _____
Eva Rocha

KERN REGIONAL CENTER
3200 N. Sillect Avenue • Bakersfield, CA 93308 • (661) 327-8531

Board of Directors Meeting

6:00 p.m. – 7:30 p.m.
KRC Malibu Conference Room
3300 N. Sillect Ave.
Bakersfield, CA 93308

MINUTES

October 25, 2016

Present Board Members:

Frank Meyer, President
Kurt Van Sciver
Matthew Lagrand
Veronica Quezada
Lorie Stewart

Laurie Hughey
Quanah Mason
Nickolerene Mensch
Tracy Brown

GENERAL BUSINESS

1. Call to Order and Introductions

The meeting was called to order at approximately 6:00 p.m. by Frank Meyer. It was determined that a quorum was present.

2. Approval/Additions to Agenda

- A. Regular Meeting of the Board of Directors Agenda dated October 25, 2016.
M/S/C - (Mason/Brown) to approve the Agenda with additions. 9-0-0.
Additions as follows:
Item 5 - Board Presidents Report – a. Vote in Replacement.
Item 10, c – add a motion for approval.
Add item 12. ARCA Report.

3. Meeting Minute Approval

- A. Minutes of the Regular Meeting of the Board of Directors held September 27, 2016.
M/S/C - (Hughey/Mensch) to approve Minutes. 9-0-0.

4. Public Input

- A. **Christina Rajlal** – Christina is the new Director of Special Projects and Program Development for NAPD. Christina spoke of NAPD's fleet service specialties. NAPD has a full service mechanic shop that caters to fleet industry and private vehicles.
- B. **Cindy Martinez & Melvina Mull** – The Thanksgiving Basket Committee attended the vendor luncheon and raised approximately \$2000. Eva Rocha and Laura

Hughes are working to obtain a grant from the foundation. Leon Denweed has offered to donate \$500.00. There will also be a Go Fund Me account set up. The committee's goal is to raise \$4000.00 in order to put about 200 baskets together.

UNFINISHED BUSINESS

REPORTS

5. Board President Report

- A. Frank announced that Carol Sackey has not been able to attend very many meetings and a letter was sent to her. At this point, the board will not be renewing her term.
- B. Frank also announced that although he is stepping down as Board President, he will continue on the board for an indefinite amount of time.
 - a. Veronica Quezada makes a motion to assign Kurt Van Sciver as interim President. **M/S/C** - (Quezada/Lagrand) to assign Kurt Van Sciver as interim Board President. 8-0-1 (Van Sciver).
- C. Kurt would like the Nominating Committee to reform and bring aboard new members in order to make the Board whole again.
- D. Kurt responded to the questions from last month's board meeting.
 - a. To the questions regarding the social security issue, Kurt announced that the board is going to meet with counsel to be advised on this matter.
 - b. The board is looking at issues regarding the defined benefit plan.
 - c. The board is also trying to improve the functionality of the Board and the Regional Center before moving on to select a Director to replace Robert Riddick.
 - d. The board does understand the deficit that the Regional Center is operating under and is taking its fiduciary responsibility seriously. The board does seriously look at the budget and its ramifications on staff, clients and vendors.

6. Financial Report

- A. Jon Gusman presented his financial report.
 - a. Please see **Attachment 1**.
 - b. Kern Regional Center's cash flow balance is \$14.3 million.
 - c. DDS notified the September claim for Kern would be paid in November.
 - d. DDS has suggested they will be offsetting claims beginning in May for March claims.
 - e. The C1 Contract Amendment, Regional centers were allowed to claim an advance on the C1 Contract Amendment. For Kern, the advance was about \$11 million. DDS has confirmed the C1 advances will be paid to Regional Centers.
 - f. To date, Kern has spent a total of \$4.62 million amongst the general fund community placement plan and its foster grandparent program. The overall percentage of actual spent to date is 24% with a projected amount to be spent of 79% from October to June 2017.
 - g. Kern's operation deficit rests at \$534,000. It remains unchanged from the last time reported.
 - h. The C1 allocation brought with it many new items, such as plans to ensure compliance with home and community based service regulations and improve service coordinator ratios.

- i. DDS provided a C1 contract amendment which shows the amount of funds Kern Regional Center obtained for new hires. The amount for service coordinator new hires, as a means to improve caseload ratio, was \$450,000.
- j. For fiscal year 16/17 purchase of services, as of September 30, 2016, Kern has spent a total of \$38.7 million amongst its purchase of service and community placement plan programs.
- k. The overall percentage of actual spent to date, when compared to what was received from the state in revenues, is 21.57%. Kern's first POS projection is not due to the state until December 10, 2016. Jon has provided an estimate as to what it may look like, with a projected balance of about \$4.1 million.

7. Interim Director Report

- A. Kern received word from the Department that effective January 1, 2017, Regional centers will decrease the amount of restorations funds for consumers residing independently. The amount will go down from \$61.20 to \$56.88 per month. Kern will notify vendors and clients.
- B. There was a deadline for vendors to apply for money in preparation for implementing the CMS rule; this deadline has been extended through the end of October.
- C. Two weeks ago, the Department held a meeting with regional center directors and directors of Fairview Developmental Centers. There was an emphasis on moving individuals out of the developmental centers in a timely manner. These large institutions receive federal funding; however, if they are out of compliance, the funds may be taken away. This may have a financial impact on Regional Center purchase of service.
- D. October 25th was the deadline for the ABX1-2 Disparity and Ethnicity grants.
- E. Kern is currently hiring to replace program managers and case managers who have left in the past year along with 7 new case management positions.
- F. Robert Riddick attended a meeting at Exceptional Families in early October. Robert emphasized at that meeting that Kern's deficit is related to the operations budget, not the purchase of service budget. KRC's operations budget does not have an impact on KRC's purchase of service budget.

8. Vendor Advisory Committee

- A. The Vendor Advisory Committee hosted the Lanterman's 50th Anniversary Celebration at the DoubleTree on October 12th. The keynote speaker was Tony Anderson, Director of the Association of Regional Center Agencies. Mayor Harvey Hall, Rudy Salas, and a representative from Senator Jean Fuller's office. Jean Fuller's office gave VAC a resolution; Mayor Harvey Hall declared October 12th Lanterman Day in Kern County.

9. Brilliant Corners

- A. Sami Abdelatif, Director of Operations for Brilliant Corners and Rodger Twitchell, Regional Development Manager, provided information on Brilliant Corners through a presentation. See **Attachment 2**.
 - a. Brilliant Corners was founded in 2004 with the mission to create affordable housing for individuals with developmental disabilities. In 2008, Brilliant Corners expanded their mission to serve other underserved populations.

- b. The corporate offices are located in San Francisco and Los Angeles with satellite offices throughout California.
- c. Brilliant Corners has about a \$90 million annual budget and is just shy of about 100 employees and have partnerships across the state with the Regional Center System as well as various public health agencies. To date, Brilliant Corners works with 12 Regional Centers throughout the state.

10. Staff Report

A. Self Determination

- a. The Self Determination Advisory Committee had their meeting on October 24th at the Kern Regional Center at 5:00 pm.
- b. The Committee had two trainings on the 24th. The first was on The Bagley-Keene meetings act, presented by Mario Espinoza, Office of Clients Rights Advocacy; the second was on Fiscal Management Service by Victor Lira, Premier and Laura Holman, Acumen.

B. Community Placement Plan

- a. KRC will be sending out a Request for Proposal for 11 projects. Two of the 11 are homes from Brilliant Corners.
- b. On September 29th, Robert Riddick, Lynn Fjeld, Cherylle Mallinson and Michelle Farley attended the Governor's Advisory Board Annual Regional Meeting at the Porterville Developmental Center.
- c. Theresa Billeci, Executive Director at Porterville Developmental Center, reported that 141 individuals are in the general treatment area while 209 individuals are in secured treatment area.
- d. Michelle Farley has, for this fiscal year, transitioned 3 individuals out of the PDC.

C. Plan of Action Regarding Caseload Ratio

- a. Laura spoke of KRC's new hire process. She explained that she anticipates 7 new service coordinators to be hired on by the end of the year.
- b. The Plan of Action regarding Caseload Ratio was presented at September's Board meeting.
M/S/C - (Meyer/Lagrand) to approve the Plan of Action regarding Caseload Ratio with a current date. 9-0-0.

11. Client Representative

- a. Roy Rocha visited DADD recently. Roy Rocha reports that the consumers would like for social recreation programs to come back. Roy asked for Robert Riddick's assistance to help contact the right people who can bring social recreation back.

12. CAC Client Advisory Committee

- a. Matthew Lagrand attended the Client Advisory Committee in Sacramento on October 24th. The committee was informed that the chair of the committee is stepping down as of January 2017.
- b. During the meeting, the clients discussed effective communication skills.
- c. Matthew Lagrand will be providing the DDS report for the Client Advisory Committee from now on.
- d. ARCA CAC legislative group also discussed social recreation and unmet needs.

- e. Matthew informed the board that he started a new project a couple of months ago, "Making our state great again."

NEW BUSINESS

GOOD AND WELFARE

- a. Meeting is adjourned at approximately 7:15 p.m.

The next Regular Meeting of the Board of Directors is scheduled for Tuesday, November 15, 2016, at 6:00 p.m. in the Malibu Conference Room at the Kern Regional Center.

Note: Requests for a disability related modification or accommodation, including auxiliary aids or services, in order to attend or participate in a meeting should be made to the Administrative Assistant during regular business hours at 661-852-3360.

Respectfully submitted: _____
Eva Rocha

Attendance

Board Members Present:

Frank Meyer, President
Kurt Van Sciver
Laurie Hughey
Lorie Stewart
Matthew Lagrand
Nickolerene Mensch
Quanah Mason
Veronica Quezada
Tracy Brown

Board Members Absent:

Richard Rodriguez
Ismael Romero

Public Members Present:

Tammie Inman
Sami Abdelatif
Rodger Twitchell
Blanca Gamboa
Christina Rajlal
Marty Lague
Joe Correa
John Noriega
Rhonda Glann
Julia Santana
David Riester
Mark Meyer
Cindy Martinez
Melvina Mull

Action Items

M/S/C - (Mason/Brown) to approve the Agenda with additions. 9-0-0. Additions as follows:

Item 5 - Board Presidents Report – a. Vote in Replacement.

Item 10, c – add a motion for approval.

Add item 12. ARCA Report.

M/S/C - (Hughey/Mensch) to approve Minutes. 9-0-0.

M/S/C - (Quezada/Lagrand) to assign Kurt Van Sciver as interim Board President. 8-0-1 (Van Sciver).

M/S/C - (Meyer/Lagrand) to approve the Plan of Action regarding Caseload Ratio with a current date. 9-0-0.

KERN REGIONAL CENTER
BUDGET AND EXPENSE REPORT
FY 2016/2017
AS OF SEPTEMBER 30, 2016

	Col. 1	Col. 2	Col. 3	Col. 4	Col. 5	Col. 6	Col. 7
(1) - OPERATIONS	Preliminary Allocation - C Series	C-1 Allocation	Total Allocation To Date thru C-1 Allocation - Col. 1 + Col. 2	Operations By Claim to State - July to Sep 2016	Projected - Oct to June 2017	Total Projected - Col. 4 + Col. 5	Projected Balance - Col. 3 - Col. 6
GENERAL							
Salaries and Benefits	\$ 13,269,648	\$ 2,177,088	\$ 15,446,736	\$ 3,514,678	\$ 11,568,587	\$ 15,083,265	
Operating Expenses	3,051,457	3,051,457	3,051,457	1,001,676	3,057,665	4,059,340	
TOTAL PERSONNEL SERVICES	13,269,648	5,228,545	18,498,193	4,516,354	14,626,252	19,142,605	(644,412)
Less: Interest Income				(2,583)	(42,417)	(45,000)	45,000
Less: ICF SPA Fees (see Note 2)				(7,651)	(52,349)	(60,000)	60,000
Less: Other Income				(577)	(4,423)	(5,000)	5,000
SUBTOTAL GENERAL	\$ 13,269,648	\$ 5,228,545	\$ 18,498,193	\$ 4,505,543	\$ 14,527,063	\$ 19,032,605	\$ (534,412)
Percentage		100%		24.36%	78.53%		-2.89%
COMMUNITY PLACEMENT PLAN (CPP)							
Salaries & Benefits	\$ 533,950	\$ 533,950	\$ 533,950	\$ 73,767	\$ 460,183	\$ 533,950	
Operating Expenses	28,525	28,525	28,525	7,222	21,303	28,525	
SUBTOTAL CPP	\$ -	\$ 562,475	\$ 562,475	\$ 80,989	\$ 481,486	\$ 562,475	\$ -
Percentage		100%		24.36%	78.53%		-2.89%
FOSTERGRANDPARENT (FGP)							
Salaries & Benefits	\$ 59,043	\$ 59,043	\$ 59,043	\$ 17,415	\$ 41,628	\$ 59,043	
Operating Expenses	112,977	112,977	112,977	19,992	92,985	112,977	
SUBTOTAL FGP	\$ -	\$ 172,020	\$ 172,020	\$ 37,407	\$ 134,613	\$ 172,020	\$ -
Percentage		100%		24.04%	78.74%		-2.78%
GRAND TOTAL OPERATIONS	\$ 13,269,648	\$ 5,963,040	\$ 19,232,688	\$ 4,623,939	\$ 15,143,161	\$ 19,767,100	\$ (534,412)

Note 1: The "Projected Balance" is an estimate of the difference between KRC's funding allocation from DDS (col. 3), and Total Projected (col. 6)

Note 2: The Intermediate Care Facility State Plan Amendment (ICF SPA) administrative fees are included in this fiscal year as an offset to current year expenditures. The fees are 1.5% of current year day program and transportation costs for KRC clients that resided in ICF's.

KERN REGIONAL CENTER
BUDGET AND EXPENSE REPORT
FY 2016/2017
AS OF SEPTEMBER 30, 2016

	Col. 1	Col. 2	Col. 3	Col. 4	Col. 5	Col. 6	Col. 7
(2) - PURCHASE OF SERVICES	Preliminary Allocation - C Series	C-1 Allocation	Total Allocation To Date thru C-1 Alloc - Col. 1 + Col. 2	Operations By Claim to State - July to Sep 2016	Projected - Oct to June 2017	Total Projected - Col. 4 + Col. 5	Projected Balance - Col. 3 - Col. 6
GENERAL							
Out of Home Care	\$ 27,596,864	\$ 6,491,275	\$ 34,088,139	\$ 8,261,141	\$ 25,619,797	\$ 33,880,938	\$ 207,201
Day Programs	21,393,226	7,419,872	28,813,098	7,137,516	21,514,958	28,652,474	160,624
Other Services	72,174,104	20,702,444	92,876,548	19,076,972	73,257,682	92,334,654	541,894
SUBTOTAL GENERAL	121,164,194	34,613,591	155,777,785	34,475,629	120,392,437	154,868,066	909,719
Less: ICF SPA Funded				(638,289)	(2,624,239)	(3,262,528)	3,262,528
TOTAL GENERAL	\$ 121,164,194	\$ 34,613,591	\$ 155,777,785	\$ 33,837,340	\$ 117,768,198	\$ 151,605,538	\$ 4,172,247
Percentage			100%	21.72%	75.60%		2.68%
COMMUNITY PLACEMENT PLAN (CPP)							
Out of Home Care	\$ 295,134	\$ 295,134	\$ 295,134	\$ 213,193	\$ 81,941	\$ 295,134	(0)
Day Programs	198,010	198,010	198,010	706	197,304	198,010	0
Other Services	3,996,996	3,996,996	3,996,996	37,145	3,959,851	3,996,996	0
TOTAL CPP	\$ -	\$ 4,490,140	\$ 4,490,140	\$ 251,045	\$ 4,239,095	\$ 4,490,140	(0)
Percentage			100.00%	5.59%	94.41%		0.00%
TOTAL PURCHASE OF SERVICE	\$ 121,164,194	\$ 39,103,731	\$ 160,267,925	\$ 34,088,385	\$ 122,007,293	\$ 156,095,678	\$ 4,172,247
Percentage			100%	21.27%	76.13%		2.60%
GRAND TOTAL ALL BUDGETS	\$ 134,433,842	\$ 45,066,771	\$ 179,500,613	\$ 38,712,324	\$ 137,150,454	\$ 175,862,778	\$ 3,637,835
Percentage			100%	21.57%	76.41%		2.03%

Note 1: The "Projected Balance" is an estimate of the difference between KRC's funding allocation from DDS (col. 3), and Total Projected (col. 6)

Note 2: Reimbursement for the estimated costs of day program and transportation for Intermediate Care Facility State Plan Amendment clients is not funded by DDS's Standard Agreement. The reimbursement to KRC will be provided from the SPA ICF's within the catchment area.

Person-Centered Development

October 25, 2016

William F. Pickel, MA, Executive Director

Sami R. Abdelatif, MPA, Program Director

Rodger Twitchell, MA, Regional Development Manager

Presentation Overview

- Brilliant Corners Introduction
- The Buy It Once Model
- Our First Kern Regional Center Homes
- Questions & Discussion

Mission & Vision

Mission

To create housing opportunities for persons with developmental disabilities and other underserved populations

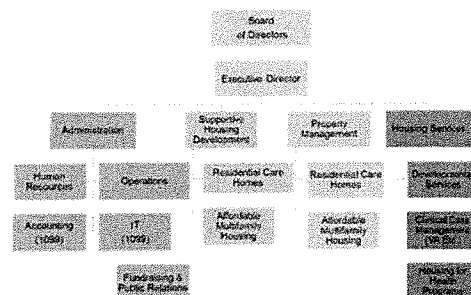
Vision

To be California's leading provider of supportive housing for persons with developmental disabilities and other vulnerable populations, with an emphasis on those transitioning from or at risk of institutionalization or homelessness

Brilliant Corners' Operations

- Primary offices in San Francisco and Los Angeles
- \$90M+ Annual Budget
- ~100 employees in Housing Development, Property Management, and Housing Services
- Partnerships with California's developmental services, homeless services, public health, and affordable housing sectors

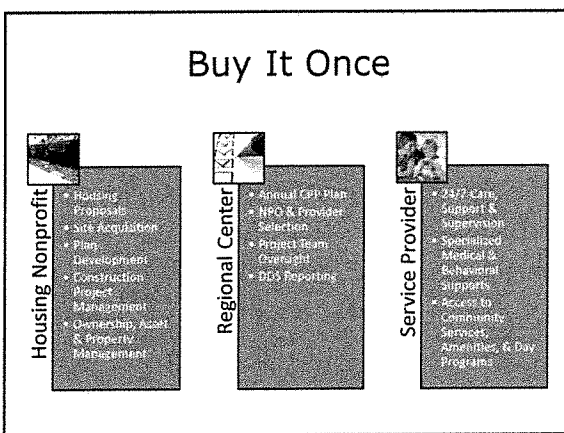
Organizational Chart





Housing Development

- ~90 CPP / Similar Homes Owned and Managed
- ~30 CPP Homes In-Progress
- ~47 CPP Homes in Development Pipeline
- 500+ Persons with Developmental Disabilities Housed
- Multi-Family Permanent Supportive Housing
- Ongoing DDS & Regional Center Compliance
- Person-Centered Design



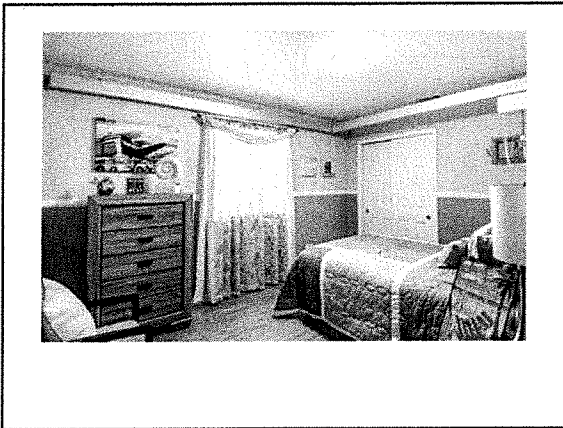
Private Ownership vs. Buy It Once

Private Ownership	Buy It Once
<ul style="list-style-type: none"> • Private Ownership without Deed Restriction • Single Entity Controls Housing and Services • No Permanent Housing Stock Created 	<ul style="list-style-type: none"> • Public/Private Partnership with Deed Restriction • Housing and Services Separated • Permanent Housing Stock Created

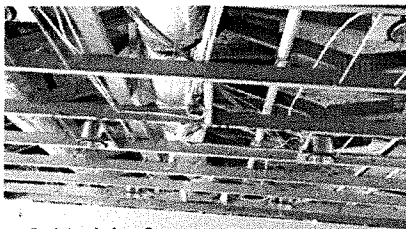
Our First KRC Homes

15/16-2 Adult Specialized Residential Facility	15/16-4 Adult Specialized Residential Facility
<ul style="list-style-type: none"> • Residents with Maladaptive Sexual Behaviors • 4-person Home with Non-Amb. Licensure • Lines of Sight; Possible Delayed Egress Doors; Safe, Secure, Private Yard; Fire Sprinklers 	<ul style="list-style-type: none"> • Residents with Chronic Medical & Severe Behavioral Challenges • 4 Person Home w/ Non-Amb. Licensure • Hardened/Softened Walls, Sound Proofing, Possible Delayed Egress, Tempered Windows, Fire Sprinklers





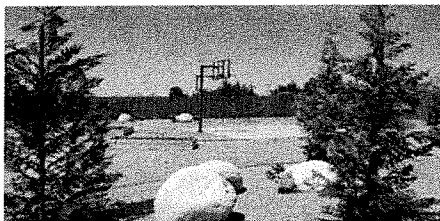
Person-Centered Design



Behind the Scenes:



- Upgraded Electrical
- Fire Sprinkler System
- HVAC Upgrades
- Recessed Lighting



Enriching Outdoor Spaces

- Large Covered Patios
- Exercise Amenities: Basketball Court, Swings, Walking Paths, Pull-up Bars
- Raised Planters for Gardening
- Fruit Trees

William F. Pickel
bill@brilliantcorners.org

Sami R. Abdelatif
sami@brilliantcorners.org

Rodger F. Twitchell
rodger@brilliantcorners.org